



ORIGINAL ARTICLE

Untargeted-metabolomics differentiation between poultry samples slaughtered with and without detaching spinal cord



Nasir Abbas^{a,1}, Arslan Ali^{b,1}, Sindhia Kumari^a, Ayesha Iqbal^b, Adnan Husain^c,
Talat Saeed^c, Zainab AbdulAmer Al-Ballam^c, Nisar Ahmed^c,
Hesham R. El-Seedi^{d,e,*}, Syed Ghulam Musharraf^{a,b,f,*}

^a H. E. J. Research Institute of Chemistry, International Center for Chemical and Biological Sciences, University of Karachi, Karachi 75270, Pakistan

^b Dr. Panjwani Center for Molecular Medicine and Drug Research, International Center for Chemical and Biological Sciences, University of Karachi, Karachi 75270, Pakistan

^c Environment & Life Science Research Center, Kuwait Institute for Scientific Research (KISR), Safat 13109, Kuwait

^d Pharmacognosy Group, Department of Pharmaceutical Biosciences, Biomedical Centre, Uppsala University, SE- 751 23 Uppsala, Sweden

^e International Research Center for Food Nutrition and Safety, Jiangsu University, Zhenjiang 212013, China

^f Halal Testing Laboratories, Industrial Analytical Center, International Center for Chemical and Biological Sciences, University of Karachi, Karachi 75270, Pakistan

Received 10 September 2020; accepted 20 October 2020

Available online 31 October 2020

KEYWORDS

Food fraud;
Halal;
LC-ESI-MS/MS;
Metabolomics;
Slaughtering;
Zabiha

Abstract Chicken meat is among the common and relatively inexpensive source of protein consumed worldwide from the poultry industry. Many communities show concern regarding the procedure of slaughtering animals for meat consumption due to ethical, religious, or cultural reasons. Liquid chromatography-electrospray ionization-tandem mass spectrometry (LC-ESI-MS/MS) based untargeted metabolomics of 40 chicken meat samples were evaluated to differentiate meat samples based on slaughtering methods. Samples were grouped into, Zabiha (cutting neck without detaching spinal cord) and Non-Zabiha (completely detaching neck). A volcano plot reveals at least

* Corresponding authors at: Pharmacognosy Group, Department of Pharmaceutical Biosciences, Biomedical Centre, Uppsala University, SE-751 23 Uppsala, Sweden (H.R. El-Seedi). H. E. J. Research Institute of Chemistry, International Center for Chemical and Biological Sciences, University of Karachi, Karachi 75270, Pakistan (S.G. Musharraf).

E-mail addresses: hesham.el-seedi@farmbio.uu.se (H.R. El-Seedi), musharraf1977@yahoo.com (S.G. Musharraf).

¹ Equal contribution.

Peer review under responsibility of King Saud University.



150 features found significantly different between the two groups having ≥ 2 -fold changes in intensities with p -values ≤ 0.05 . Among them 05 identified and 25 unidentified metabolites have clear differences in peak intensities. The identified features can be employed to differentiate meat obtained from different slaughtering methods. A characteristic pattern based on principal component analysis (PCA) and orthogonal partial least square-discriminant analysis (OPLS-DA) was observed among the groups. The results will benefit Halal certification, food safety, and security agencies to curb food fraud.

© 2020 The Authors. Published by Elsevier B.V. on behalf of King Saud University. This is an open access article under the CC BY license (<http://creativecommons.org/licenses/by/4.0/>).

1. Introduction

Food plays a vital role in social, cultural, and religious lifestyles across the globe (Jorfi et al., 2012). Chicken meat is a cheaper and common portion of food in most parts of the world as a source of proteins, essential amino acids, minerals, vitamins, and essential fatty acids (Ali et al., 2011). Production and export of chicken meat is an important industry and business worldwide. Due to globalization variety of food products of different geographical origins are available to consumers. Many of the consumers are interested in knowing the quality, production method, geographical origin, and authenticity of food products for ethical, social, religious, and/or dietary considerations (Danezis et al., 2016, Ellis et al., 2005). Global competition to produce the cheapest products promotes economic fraud such as mislabeling of products (Cajka et al., 2013, Ruiz Orduna et al., 2015). Such practices not only shake the trust of consumers but are also a mounting challenge for relevant authorities to establish meat authenticity (Ellis et al., 2015, Primrose et al., 2010). Although, there are several developed methods to control food fraud but there is no such method that can differentiate slaughtering methods.

Countries such as the USA, China, Brazil, etc., are among the biggest exporters of meat. Globally spread Muslim and or Jewish population of over 1.6 billion (Center, 2015, Desilver and Masci, 2017) consume and import chicken meat to be produced from specific rights of slaughter from these producers. This requires the Halal food authorities to confirm the meat to be produced according to the Islamic rights i.e. Zabiha slaughter. Zabiha (or Dhabiha, ZA) slaughtering procedure involves the severing of the throat with a single stroke of a sharp knife thus cutting a carotid artery, jugular vein, windpipe, and esophagus without injuring the spinal cord. Non-Zabiha (NZ) slaughter may involve completely cutting off the neck of the animal during slaughter. Ali et al. has recently reported the differentiation between zabiha/non-zabiha slaughtering methods suggesting the changes in energy metabolism, however, no details of the parameters for the authentication of identified metabolites and chromatographic profiling were given which seriously limits the scope of the study (Ali et al., 2020). Therefore, methods that can distinguish meat produced from Zabiha slaughter from other common methods are of great economic, social, and religious importance owing to the Islamic population reaching two billion in near future globally (Center, 2011).

Several attempts had been made to produce methods for the authentication of meat (Ali et al., 2012, Ruiz Orduna et al., 2015, Sidwick et al., 2017, Trivedi et al., 2016). However, they are generally developed to target issues of adulteration of

pork or horse meat/fat to chicken meat or beef by identifying specific peptides or DNA. The species authentication to check if the meat label belongs to the actual species is also found in several methods, though possible differentiation of chicken meat samples that only differs from the way of slaughtering is challenging. It is suggested that when various procedures of slaughtering are applied, the animal can undergo different pain or psychological stress specific to the treatment (Grandin, 1980, Morzel et al., 2003). Thus, an organism's response to specific treatment may result in differences in chemical composition and levels of meat metabolites that can be used to distinguish the meat obtained from the halal or non-halal slaughtering. Additionally, it is reported that different slaughtering methods can result in retainment of blood in meat at different levels (Kotula and Helbacka, 1966).

The term metabolomics is an emerging, broad, and significant field to understand the biochemical phenomena occur in complex cell system of all organisms in response to internal and/or external perturbation especially in medicine and agriculture. It has the potential to be used in forensic and food technology (Dettmer et al., 2007, Liu et al., 2013, Mattes et al., 2014, Robertson, 2005). Untargeted metabolomics can generate a large amount of information from a biological sample which can be subjected to chemometric analysis to find similarities and differences among the samples leading to the level two putative identification of compounds (Hajimohammadi et al., 2014). Sidwick et al. have demonstrated the utility of untargeted metabolomics for the potential differentiation between normally slaughtered and dead on arrival poultry meat samples (Sidwick et al., 2017). This study aimed to analyze differences in poultry samples, due to the slaughtering procedure employed, at the metabolome level using an untargeted metabolomics approach. These differences can be further exploited for differentiating meat obtained from Zabiha and Non-Zabiha slaughter based on potential candidate compounds.

2. Experimental

2.1. Chemicals and reagents

All chemicals and reagents used were of analytical grade. Methanol, formic acid, and chloroform were purchased from Daejung chemicals and metals, Co. (Siheung, Gyeonggi, Korea), while internal standards, *N*-Fmoc-L-alanine was purchased from Chem-impex international (Wood Dale, IL, USA) and *N*-Fmoc-L-serine (OtBu) was purchased from GL Biochem Ltd. (Shanghai, China). Deionized water (Milli-Q 18.2

MQ.cm) was used throughout the study (Millipore, Billerica, MA, USA).

2.2. Sample collection and storage

Meat samples of a total of 40 slaughtered broiler chickens with similar ages (45 ± 2 days), weights (1.8 ± 0.3 kg), and gender (all females) were collected from the same batch of a poultry farm in Karachi, Pakistan. All chickens were fed with the same diet and reared in ambient conditions. Samples were divided into types Zabiha (ZA, $n = 20$), and Non-Zabiha (NZ, $n = 20$) samples according to the slaughtering procedure. Zabiha samples were slaughtered using halal protocol while Non-Zabiha were slaughtered by direct cutting of complete neck (including spinal cord) by a trained butcher (Benzertihia et al., 2018, Rahman, 2017) followed by storage at -80 °C for analysis. By considering guidelines of the National Institutes of Health (NIH), ethical clearances for the studies were obtained from the local ethical committee of the International Center for Chemical and Biological Sciences, University of Karachi, Karachi, Pakistan (ethical clearance code is 023-HB-2017). A "Fatwa" (permission in the light of Islamic rights) was obtained from Sanha Halal Associates Pakistan Pvt. Ltd. Karachi, Pakistan.

2.3. Sample preparation

Approximately 0.5 g of each meat sample was taken from different body parts including breast, wing, and leg regions in equal amount followed by homogenization using liquid nitrogen. 100 mg of powder material from each sample was extracted using 400 μ L of chloroform and 400 μ L methanol. A 50 μ L of an internal standard solution consisting of a mixture of *N*-Fmoc-L-alanine and *N*-Fmoc-L-serine (OtBu) at a concentration of 10 μ g/mL was added to the sample followed by mixing for 20 min at 28 °C. After that 400 μ L of Milli-Q was added and the sample was vortex for 15 secs, followed by centrifugation for 10 min at 12000 rpm to separate organic and aqueous layers. For initial experiments, both layers were vacuum dried and then dissolved in methanol: water in ratios of 1:1 and 1:4, respectively, for liquid chromatography mass spectrometry (LCMS) analysis. However, for detailed work, only aqueous layers of all samples were taken to a fresh tube and were evaporated using a vacuum concentrator. Vacuum dried samples were dissolved in a 100 μ L mixture of methanol: water (1:4) and a separate quality control (QC) sample was prepared by pooling 10 μ L of each prepared sample. A total of 10 blind samples (Zabiha = 05 and Non-Zabiha = 05) were also prepared and run similarly as other samples were done. All samples were transferred to autosampler vials for LC-MS analysis and the data was acquired in a single batch in a random sequence.

2.4. Chromatographic and mass spectrometric parameters

Samples were analyzed on UHPLC (Thermo Scientific Dionex 3000) coupled with an Ultra High-Resolution QTOF mass spectrometer (maxis II, Bruker Daltonics, Bremen, Germany)

equipped with the electrospray ion source. The mass spectrometry system was calibrated using an internal calibrant solution (sodium formate 0.1 M) injected at the flowrate of 3 μ L/min by using a syringe pump before each injection to ensure a high-level of mass accuracy. The separation was carried on an RP-18 column (100 mm \times 3.0 mm, 1.8 μ m, Macherey-Nagel, Düren, Germany). The column was maintained at 40 °C and the injection volume was 10 μ L. The flow rate of mobile phase was 0.40 mL/min and solvent A was 0.1% formic acid and B was methanol with 0.1% formic acid. The linear gradient to 100% B in 16 min, hold at 100% B for 4 min. Return to 100% A in 2 min followed by 2 min equilibration at 100% A, the total run time was 24 min (Trivedi et al., 2016). All the samples were analyzed in positive ion mode. The parameters were set as following, drying gas temperature of 270 °C, the flow of drying gas was set at 12.0 L/min, a capillary voltage of 4500 V, mass range of 100–1200 m/z , Nebulizer pressure of 3.1 bar, spectral rate 2.00 Hz. The same ion source conditions were also used for MSMS mode. Data were recorded using Bruker Hystar software version 4.1 and calibrated using Data Analysis 4.4 (Bruker). Auto MS/MS analysis was done on pooled samples. Top 3 peaks were selected for MSMS analysis with an active exclusion for 30 sec.

2.5. Metabolite extraction

The potential metabolite features were extracted, aligned and intensity normalized on internal standard with data log₂-transformed using Metaboscape 3.0 (Bruker). For feature extraction using Metaboscape software following parameters were used, Intensity threshold was 900 counts, Minimum peak length of 9 spectra, Minimum peak length (recursive) of 7 spectra, Minimum feature for extraction were 1/3 of all analyzed samples including QCs. After retention time correction and chromatogram alignment total of 1186 features were generated. Every feature represents a specific m/z value of $[M+H]^+$ ion and possible sodium adducts, retention time, and peak height. For identification and molecular formula generation, exact mass of parent ions were matched with < 3 ppm error and mSigma value < 50 in most cases. MS/MS spectra of significantly different features were searched in the NIST 14 tandem mass spectral library and Mass Bank of Europe.

2.6. Statistical analysis

A statistical tool such as a volcano plot was applied at a 95% confidence level on generated features to find significant features between case studied meat samples. Principal component analysis (PCA) was plotted with the SIMCA 14.0 software (Umetrics, Umea, Sweden) for an impression of the data distribution and similarities between samples i.e. clustering and potential outlier identification. After removing an outlier, the orthogonal partial least square-discriminant analysis (OPLS-DA) model was calculated with unit variance scaling. The cross-validation of OPLS-DA model was performed by permutation analysis (500 times). The quality of the 7-fold cross-validated OPLS-DA model was defined by the R² and Q², parameters and was further evaluated using a permutation test.

3. Results and discussion

3.1. Metabolomic profiling by LC-QTOF-MS

Metabolomic Profiling of meat samples was performed using LC-Q-TOF-MS performed in positive mode. Initial data collected on the aqueous and organic extracts of Zabiha samples suggest the presence of a higher number of features with better intensities for an aqueous layer when compared to the organic layer. Therefore, further work was performed on the aqueous layer of the samples. The Base Peak Chromatogram (BPC) of aqueous extracts of both Zabiha and Non-Zabiha samples were found very similar (Supplementary Figure S1). However, few minor peaks seem to differ upon careful visual examination. A chromatogram of one Non-Zabiha sample appear very different and was removed from further statistical analysis. Samples derived from the aqueous phase shows a good chro-

matographic separation between 5 and 17.5 min. For a detailed investigation of differences between each type of sample, a total of 1186 metabolite features were extracted. A total of 75 out of all metabolites were annotated based on the exact mass measurement by the Human Metabolome Database (HMDB) with at least 10 ppm error and are listed in Supplementary Table S1, Supporting Information. The annotated compounds mostly belong to fatty acids, phospholipids, sphingolipids, amino acids, peptides, glycosides, adenosine triphosphate (ATP), nucleotides, neurotransmitters, and some plant metabolites. Volcano plot between Zabiha and Non-Zabiha samples suggest 150 features that were found significantly different between the two groups with at least two-fold change at 0.05 *p*-value (Fig. 1). Further, only 05 metabolites among the significantly different features have been identified using MSMS spectral data searched in tandem mass spectral libraries including NIST Tandem MS/MS Library 2014, and Mass Bank of Europe. The level of identification used was

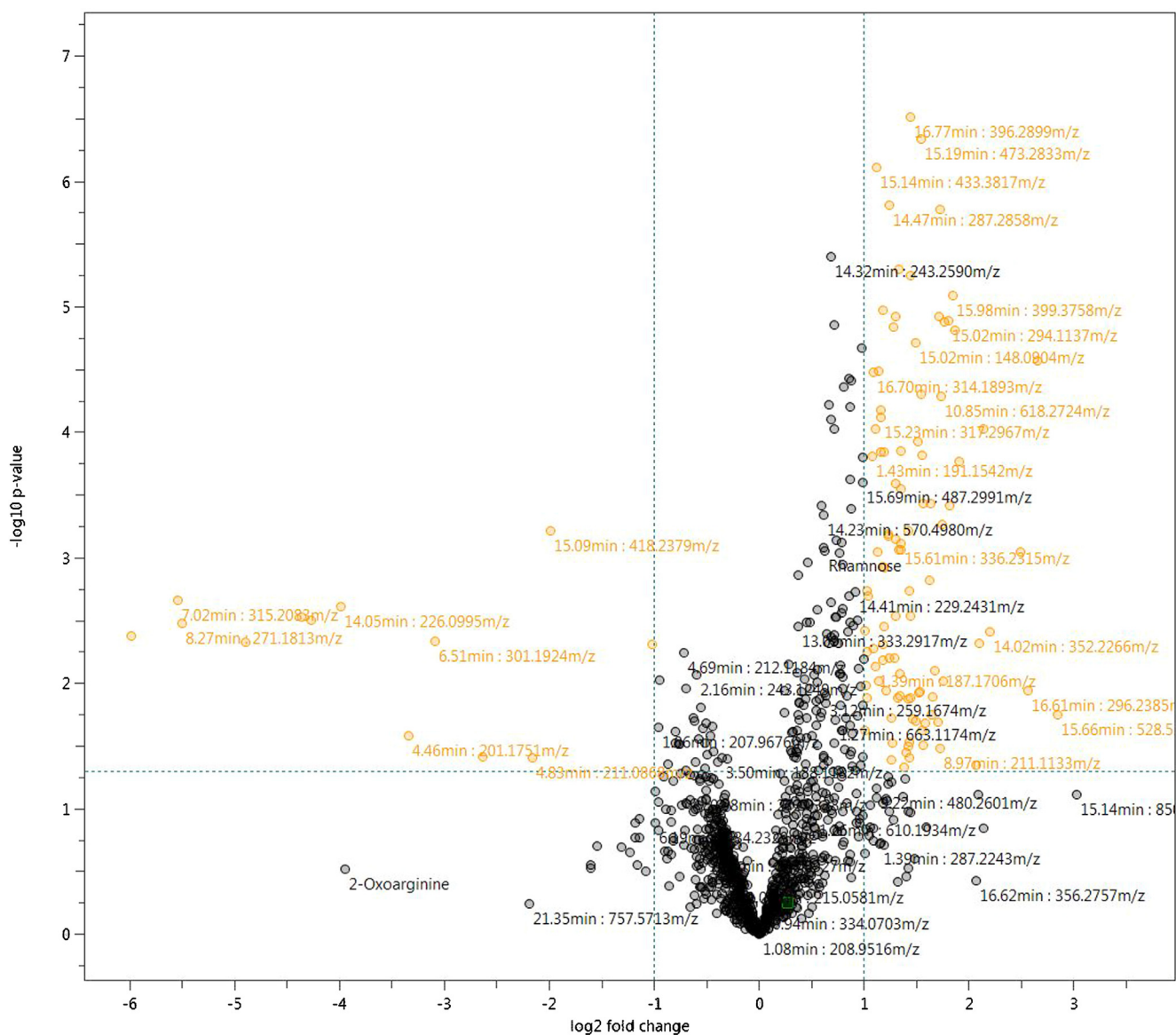


Fig. 1 Volcano plot showing significantly different metabolites in orange color between Zabiha and Non-Zabiha samples with at least ≥ 2 -fold change at ≤ 0.05 *p*-value.

described as reported earlier (May and McLean, 2016, Schrimpe-Rutledge et al., 2016). Identified compounds shown in Table 1 belong to peptide and fatty acids which are linolenic acid, 1-(9Z-Octadecenoyl)-sn-glycero-3-phosphocholine, 13-Keto-9Z,11E-octadecadienoic acid, Lysophosphatidylcholine 16:0, and D-erythro-sphinganine. Further validation is required for absolute confirmation by using standard compounds. Additionally, extracted ion chromatograms (EICs) of all compounds were manually extracted in individual raw files to check visible differences in peak intensities. A list of 25 compounds with p -values ≤ 0.05 is presented in Table 2 and box plots showing clear visible differences in intensities are given in Supplementary Figure S2 online. However, we were not able to identify or annotate them. The molecular formulas for those compounds were predicted within < 5 ppm accuracy and isotopic pattern match.

3.2. Multivariate data analysis

PCA plot on all extracted features does not show meaningful separation at the x-axis, however, incomplete separation on the y-axis was observed (Supplementary Figure S3). The QC data was plotted with PCA (Supplementary Figure S4) to check the analysis reproducibility and stability of the instrument showing all QC pools were lie in between the samples. The outlier was detected by using Hotelling's T_2 model only one outlier was found with the confidence limit of 99% and 95% (Supplementary Figure S5). After removing an outlier from PCA, OPLS-DA was generated. Construction of stepwise OPLS-DA model, based on the features extracted from the training set, between Zabiha, and Non-Zabiha samples results in the calculated prediction model with excellent performance ($R^2 = 0.966$ $Q^2 = 0.609$, CV ANOVA $p < 1.3 \times 10^{-3}$). For

Table 1 Putative metabolite identification by exact mass measurement and tandem mass spectral library search having ≥ 2 -fold change difference at p -value ≤ 0.05 between Zabiha and Non-Zabiha chicken meat samples.

S. No.	Name	PubChem ID	RT (min)	Observed mass (amu)	Formula	Ion type	Calculated mass (amu)	Error (ppm)	Level of Identification
1	13-Keto-9Z,11E-octadecadienoic acid	6,446,027	14.02	295.2274	$C_{18}H_{30}O_3$	$[M + H]^+$	295.2267	2.4	02
2	Linolenic acid	5,280,934	16.60	279.2318	$C_{18}H_{30}O_2$	$[M + H]^+$	279.2318	0.1	02
3	LysoPhosphatidylcholine 16:0	10,097,314	17.45	496.3407	$C_{24}H_{50}NO_7P$	$[M + H]^+$	496.3397	2.0	02
4	1-(9Z-octadecenoyl)-sn-glycero-3-phosphocholine	16,081,932	17.58	522.3555	$C_{26}H_{52}NO_7P$	$[M + H]^+$	522.3554	0.2	02
5	D-erythro Sphinganine	91,486	15.15	302.3062	$C_{18}H_{39}NO_2$	$[M + H]^+$	302.3053	2.9	02

Table 2 List of unidentified compounds with having ≥ 2 -fold change difference at p -value ≤ 0.05 between Zabiha and Non-Zabiha chicken meat samples.

S. No.	Molecular Formula	m/z (amu)	p -value	Ion type	RT (min)	Calculated Mass (amu)	mSigma value	Error (ppm)
1	$C_{10}H_{39}N_3O$	212.1206	0.03	$[M + H]^+$	08.96	212.1215	34.75	4.24
2	$C_{19}H_{40}N_4S$	379.2864	< 0.01	$[M + Na]^+$	18.21	379.2865	78.15	0.26
3	$C_{12}H_{22}O_6S$	295.1210	0.02	$[M + H]^+$	15.02	295.1210	43.95	0.05
4	$C_{22}H_{51}N_5S$	418.3940	< 0.01	$[M + H]^+$	15.82	418.3938	73.83	0.49
5	$C_{14}H_{42}N_5O_9P$	456.2798	0.01	$[M + H]^+$	16.01	456.2793	21.92	1.12
6	$C_{20}H_{53}N_5O_5$	444.4100	< 0.01	$[M + H]^+$	15.96	444.4119	57.82	-4.38
7	$C_{18}H_{45}N_3O_{10}$	464.3190	0.03	$[M + H]^+$	17.96	464.3178	32.75	2.65
8	$C_{34}H_{68}O_{22}$	851.4080	< 0.01	$[M + Na]^+$	14.62	851.4094	35.56	-1.70
9	$C_{20}H_{61}N_{13}O_{23}$	852.4109	< 0.01	$[M + H]^+$	15.41	852.4076	95.97	3.87
10	$C_{19}H_{58}N_{12}O_{14}$	679.4260	< 0.01	$[M + H]^+$	17.52	679.4268	20.20	-1.21
11	$C_{17}H_{49}N_8O_{15}P$	637.3129	0.01	$[M + H]^+$	17.55	637.3128	21.81	0.19
12	$C_{15}H_{43}N_{10}O_{14}P$	619.2796	< 0.01	$[M + H]^+$	10.85	619.2771	31.98	4.10
13	$C_{13}H_{33}NO_5S$	316.2155	< 0.01	$[M + H]^+$	7.69	316.2152	52.62	0.88
14	$C_{14}H_{43}N_4O_4PS$	395.2815	< 0.01	$[M + H]^+$	16.71	395.2815	82.47	-0.10
15	$C_{14}H_{38}N_{10}O_5$	427.3080	0.03	$[M + H]^+$	17.95	427.3099	32.09	-4.54
16	$C_{18}H_{41}NO_6P_2$	430.2484	< 0.01	$[M + H]^+$	9.03	430.2482	47.25	0.49
17	$C_{12}H_{31}NO_5S$	302.1997	< 0.01	$[M + H]^+$	6.51	302.1996	52.61	0.43
18	$C_{15}H_{14}O_2$	227.1068	< 0.01	$[M + H]^+$	14.05	227.1067	41.48	0.63
19	$C_{16}H_{44}N_{12}O_5$	485.3641	< 0.01	$[M + H]^+$	7.1	485.3630	39.55	2.19
20	$C_{18}H_{32}O_2$	303.2330	< 0.01	$[M + H]^+$	20.9	371.2703	71.83	2.42
21	$C_{20}H_{32}O_5$	353.2338	< 0.01	$[M + H]^+$	14.02	353.2323	63.42	4.39
22	$C_{33}H_{44}N_2O$	507.3351	< 0.01	$[M + Na]^+$	17.34	507.3345	68.59	-1.18
23	$C_{20}H_{42}O_5S$	395.2815	< 0.01	$[M + H]^+$	16.71	395.2826	69.00	-2.71
24	$C_{19}H_{38}N_4S$	377.2707	< 0.01	$[M + Na]^+$	17.84	377.2709	75.73	-0.63
25	$C_{20}H_{41}NO_{10}$	456.2798	0.01	$[M + H]^+$	16.01	456.2803	47.45	-1.15

OPLS-DA model generation, Zabiha samples were taken as a control in comparison from Non-Zabiha samples. OPLS-DA plot shows a clear separation of the clusters of Zabiha features on the x-axis distinguishing it from Non-Zabiha samples (Fig. 2). The classification shows 100% correct classification for both Zabiha and Non-Zabiha samples (Supplementary Table S2). For internal validation permutation was performed which suggested a good quality of OPLS-DA (Supplementary Figure S6). Receiver Operating Characteristic (ROC) was also performed to check sensitivity and selectivity for tested samples. Models showed 100% sensitivity and selectivity for the tested samples and area under curve (AUC) values are 0.99 and 1.00 for Zabiha and Non-Zabiha samples, respectively, suggesting the goodness of the fit as shown in Supplementary Figure S7. For external validation of the OPLS-DA model, 10 blind samples were analyzed and tested on the model for classification. The model correctly classifies those blind sam-

ples in Zabiha and Non-Zabiha groups, respectively (Supplementary Figure S8). Heatmap was generated using normalized intensities of five statistically significant metabolites and is presented in (Fig. 3). Clear differences in intensities of identified metabolites are evident and thus can potentially be used to differentiate both sample types.

3.3. Identified differential metabolites

1-(9Z-Octadecenoyl)-*sn*-glycero-3-phosphocholine also termed as LysoPC (18:1(9Z)) and lysophosphatidylcholine 16:0 both are lysophospholipids (LPLs) formed by the substitution of glycerol moiety in monoglycerophospholipid by a phosphorylcholine molecule. Lysophosphatidylcholines are present in most of the animal tissues in small quantities and are derived from phosphatidylcholine hydrolysis by the phospholipase

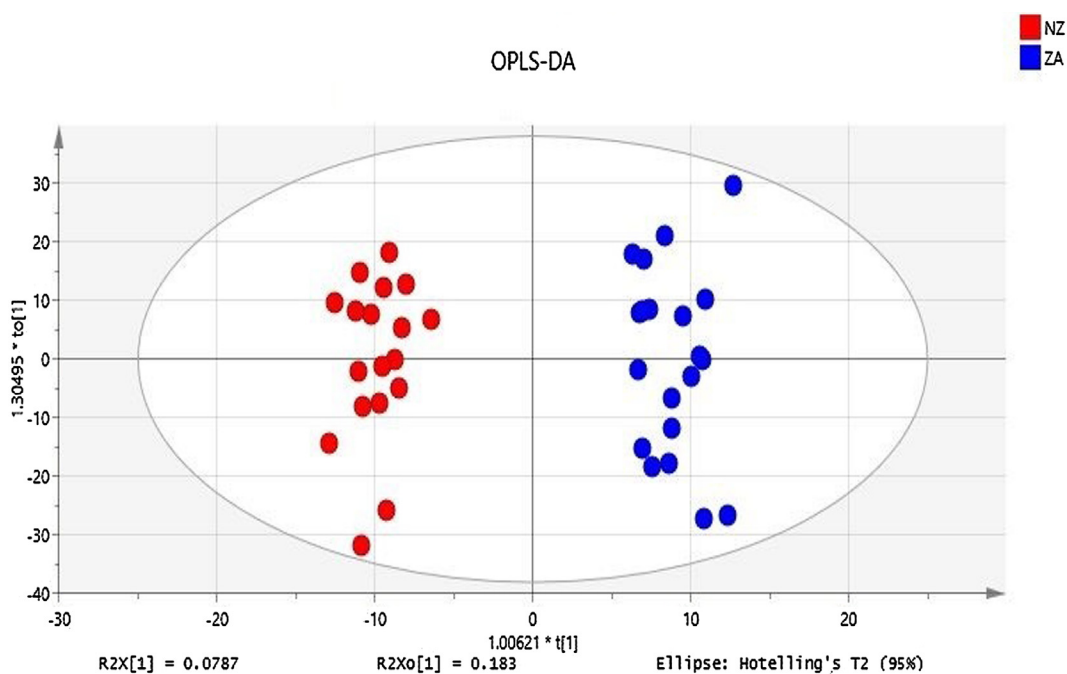


Fig. 2 OPLS-DA plot shows a clear differentiation of Zabiha and Non-Zabiha samples on the x-axis.

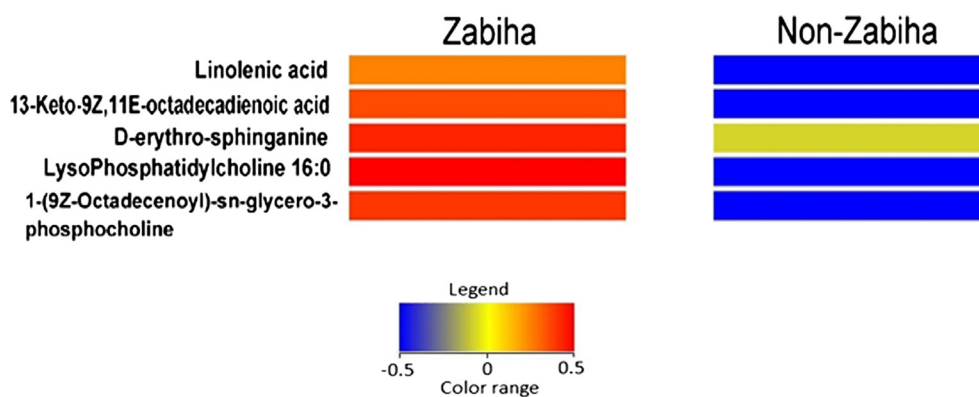


Fig. 3 Heatmap showing intensities of metabolites identified by tandem mass spectral library search having ≥ 2 -fold change difference at p -value ≤ 0.05 between Zabiha and Non-Zabiha chicken meat samples.

A2 enzyme, as part of the de-acylation/re-acylation cycle. These lipids act as signaling molecules on lysophospholipid receptors (LPL-R) that are members of the G protein-coupled receptor (GPCRs) family of integral membrane proteins (Frasch et al., 2007). Alteration in lysophospholipids i.e. decrease has been reported due to multiple factors like inflammation (Masquelier et al., 2018). The levels of both lysophospholipids i.e. 1-(9Z-octadecenoyl)-sn-glycero-3-phosphocholine (LysoPC (18:1(9Z))) and lysophosphatidylcholine (16:0) were found higher in Zabiha compared to Non-Zabiha samples with p-values of 0.02881 and 0.0152, respectively. The probable reason could be an increased inflammatory response in Non-Zabiha samples that resulted in reduced levels of these two lysophospholipids.

13-keto-9Z,11E-octadecadienoic acid (13-OxoODE) belongs to a group of compounds referred to as linoleic acid derivatives that are produced by an NAD⁺-dependent dehydrogenase i.e. retinol dehydrogenase, from 13-hydroxyoctadecadienoic acid (13-HODE). The interaction of this molecule with multiple receptors has been reported. However, the reason behind its higher levels in Zabiha chicken meat could be its activity as a repressor of proinflammatory factors. As it has been reported that 13-oxo-ODE binds to peroxisome proliferator-activated receptor gamma (PPAR γ) and induce anti-inflammatory effects (Altmann et al., 2007). Differences in levels of this metabolite (with a p-value of 0.02217) suggest

that chicken, when slaughtered in a Zabiha manner, might experience decreased inflammatory response.

D-erythro-sphinganine is a dihydrosphingosine that is a key intermediate of ceramide synthesis and a precursor of sphingosine (Górska et al., 2005). Sphinganine is known as a protein kinase C inhibitor and may have beneficial effects (Anderson et al., 2007). Recently, the downregulation of sphingosine has been reported in dead on arrival as compare to normally slaughtered poultry meat (Sidwick et al., 2017). We have observed the presence of both sphingosine and D-erythro-sphinganine in both types of samples. Visually, the intensities of D-erythro-sphinganine were found higher in zabiha samples, however, the t-test does not suggest the differences are significant (p value = 0.8525).

Linolenic acid is a member of omega-3 (Ω -3) fatty acids that are synthesized naturally only in plants, therefore, referred to as essential fatty acids for animal nutrition. This Ω -3-fatty acid is required for the synthesis of precursors of important signaling molecules like leukotrienes, thromboxane, and prostaglandins that are involved in important biological processes (Watson and De Meester, 2015). The presence of linolenic acid has been reported in chicken meat concerning its diet as well (Kartikasari et al., 2012). We have also identified the difference of this essential fatty acid in between Zabiha and Non-Zabiha, that its levels were found relatively higher in Zabiha samples compared to Non-Zabiha samples. As blood is known to be

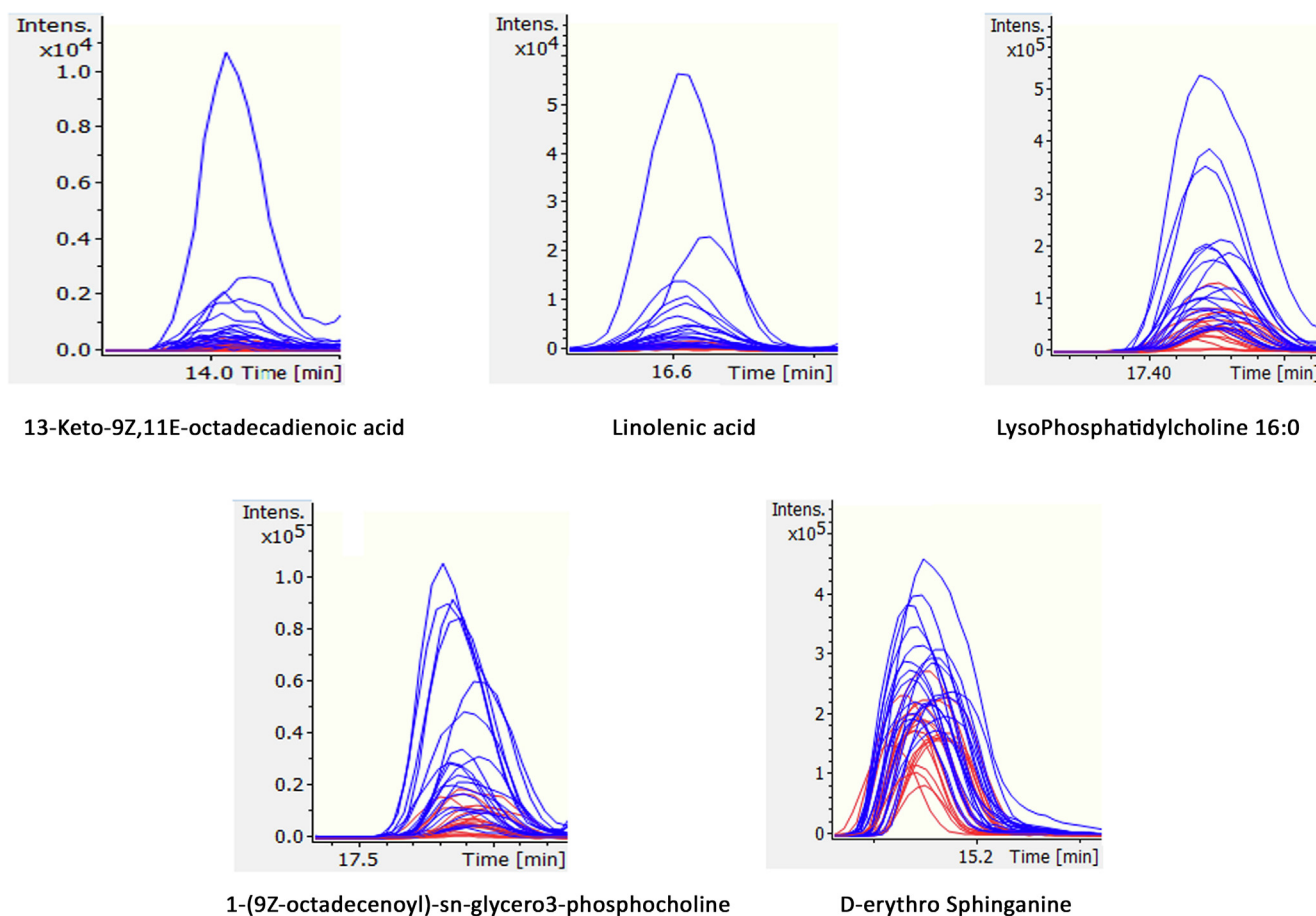


Fig. 4 Extracted ion chromatograms (EICs) of the identified metabolites 1–5 in individual samples suggesting clear differences in intensities between each group in original data.

retained in meat tissue during Non-Zabiha slaughter, the release of linolenic acid out of tissue into retained blood is plausible. This, upon washing of tissue, can be lost. To further confirm, the exact masses of both identified and unidentified metabolites were extracted in original data files to check if the intensities are different. These compounds have the potential to be used as putative markers after validation for meat differentiation (Fig. 4).

4. Conclusion

Methods differentiating the poultry meat based on slaughtering procedure have immense economic, ethical, cultural, and/or religious importance. It is demonstrated that the untargeted metabolomics approach can be used to distinguish meat sources when applied to chicken meat samples obtained from Zabiha compared to Non-Zabiha slaughter samples. The comparative LC-MS/MS analysis resulted in pointing out several metabolites that were found significantly different between the sample groups. These identified metabolites are not only beneficial to differentiate the Zabiha sample but also suggest the plausible biological pathways that are perturbed during animal experiencing various slaughtering procedures. This study will be useful for the agencies and authorities that concern the food regulations based on Halal and Kosher slaughtering thus curbing potential food frauds and mislabeling.

Funding

This research work was funded by the Islamic Development Bank.

6. Compliance with Ethics Requirements

All Institutional and National Guidelines for the care and use of animals were followed.

Declaration of Competing Interest

The authors declare no conflict of interest that pertain to this work.

Acknowledgments

The authors are grateful to the Islamic Development Bank for the partial funding of this research work. Mr. Nasir Abbas is thankful to H. E. J. Research Institute of Chemistry for providing study fellowship.

Author contribution

Study design: SGM; Sample collection: Nasir Abbas (NA); Experiments, Investigation and Data interpretation: Nasir Abbas (NA), AA; Statistical Analysis, Software, and Validation: SK, AA; Data analysis: ZAAA and Nisar Ahmed (NA); Biological interpretation: AI, SGM, Nasir Abbas (NA), AA, SK, AI, TS, AH, ZAAA, NA, and HRES assisted in reviewing the manuscript. All authors contributed to manuscript writing.

Appendix A. Supplementary material

Supplementary data to this article can be found online at <https://doi.org/10.1016/j.arabjc.2020.10.032>.

References

- Ali, M.E., Kashif, M., Uddin, K., Hashim, U., Mustafa, S., Che Man, Y.B., 2012. Species authentication methods in foods and feeds: the present, past, and future of halal forensics. *Food Anal. Methods* 5 (5), 935–955.
- Ali, N.S.M., Zabidi, A.R., Manap, M.N.A., Zahari, S.M.S.N.S., Yahaya, N., 2020. Effect of different slaughtering methods on metabolites of broiler chickens using Ultra High-Performance Liquid Chromatography-Time of Flight-Mass Spectrometry (UHPLC-TOF-MS). *Food Res.* 4 (S1), 133–138.
- Ali, S.A., Abdalla, H.O., Mahgoub, I.M., 2011. Effect of slaughtering method on the keeping quality of broiler chickens' meat. *Egypt Poultry Sci.* 31 (31), 727–736.
- Altmann, R., Hausmann, M., Spöttl, T., Gruber, M., Bull, A.W., Menzel, K., Vogl, D., Herfarth, H., Schölmerich, J., Falk, W., 2007. 13-Oxo-ODE is an endogenous ligand for PPAR γ in human colonic epithelial cells. *Biochem. Pharmacol.* 74 (4), 612–622.
- Anderson, P.W., McGill, J.B., Tuttle, K.R., 2007. Protein kinase C beta inhibition: the promise for treatment of diabetic nephropathy. *Curr. Opin. Nephrol. Hypertens.* 16 (5), 397–402.
- Benzertih, A., Kierończyk, B., Rawski, M., Jozefiak, A., Mazurkiewicz, J., Jozefiak, D., Messikh, M.S., Świątkiewicz, S., 2018. Cultural and practical aspects of halal slaughtering in food production. *Medycyna Weterynaryjna-Veterinary Medicine-Science and Practice.* 74 (6), 371–376.
- Cajka, T., Danhelova, H., Zachariasova, M., Riddelova, K., Hajslova, J., 2013. Application of direct analysis in real time ionization–mass spectrometry (DART–MS) in chicken meat metabolomics aiming at the retrospective control of feed fraud. *Metabolomics* 9 (3), 545–557.
- Center P. The Future of the Global Muslim Population: Projections for 2010–2030: January; 2011 [Available from: <https://www.pewforum.org/2011/01/27/the-future-of-the-global-muslim-population/>].
- Center PR. The future of world religions: Population growth projections, 2010–2050 2015 [Available from: <https://www.pewforum.org/2015/04/02/jews/>].
- Danezis, G.P., Tsagkaris, A.S., Camin, F., Brusica, V., Georgiou, C.A., 2016. Food authentication: techniques, trends & emerging approaches. *TrAC, Trends Anal. Chem.* 85, 123–132.
- Desilver D, Masci D. World's muslim population more widespread than you might think. 2017 [Available from: <https://www.pewresearch.org/fact-tank/2017/01/31/worlds-muslim-population-more-widespread-than-you-might-think/>].
- Dettmer, K., Aronov, P.A., Hammock, B.D., 2007. Mass spectrometry-based metabolomics. *Mass Spectrom. Rev.* 26 (1), 51–78.
- Ellis, D.I., Broadhurst, D., Clarke, S.J., Goodacre, R., 2005. Rapid identification of closely related muscle foods by vibrational spectroscopy and machine learning. *Analyst.* 130 (12), 1648–1654.
- Ellis, D.I., Muhamadali, H., Haughey, S.A., Elliott, C.T., Goodacre, R., 2015. Point-and-shoot: rapid quantitative detection methods for on-site food fraud analysis—moving out of the laboratory and into the food supply chain. *Anal. Methods* 7 (22), 9401–9414.
- Frasch SC, Zemski-Berry K, Murphy RC, Borregaard N, Henson PM, Bratton DL. Lysophospholipids of different classes mobilize neutrophil secretory vesicles and induce redundant signaling through G2A. *Journal of immunology (Baltimore, Md : 1950).* 2007;178(10):6540-8.
- Górska M, Dobrzyń A, Baranowski M. Concentrations of sphingosine and sphinganine in plasma of patients with type 2 diabetes. *Medical science monitor.* 2005;11(1):CR35-CR8.

- Grandin, T., 1980. The effect of stress on livestock and meat quality prior to and during slaughter. *Int. J. Study Anim. Probl.* 1 (5), 313–337.
- Hajimohammadi, B., Ehrampoush, M.H., Hajimohammadi, B., 2014. Theories about effects of Islamic slaughter laws on meat hygiene. *Health Scope.* 3 (1).
- Jorfi, R., Mustafa, S., Man, Y.B.C., Hashim, D.B.M., Sazili, A.Q., Farjam, A.S., Nateghi, L., Kashiani, P., 2012. Differentiation of pork from beef, chicken, mutton and chevon according to their primary amino acids content for halal authentication. *Afr. J. Biotechnol.* 11 (32), 8160–8166.
- Kartikasari, L., Hughes, R., Geier, M., Makrides, M., Gibson, R., 2012. Dietary alpha-linolenic acid enhances omega-3 long chain polyunsaturated fatty acid levels in chicken tissues. *Prostaglandins Leukot. Essent. Fatty Acids* 87 (4–5), 103–109.
- Kotula, A., Helbacka, N., 1966. Blood retained by chicken carcasses and cut-up parts as influenced by slaughter method. *Poult. Sci.* 45 (2), 404–410.
- Liu, C., Pan, D., Ye, Y., Cao, J., 2013. ¹H NMR and multivariate data analysis of the relationship between the age and quality of duck meat. *Food Chem.* 141 (2), 1281–1286.
- Masquelier, J., Alhouayek, M., Terrasi, R., Botteman, P., Paquot, A., Muccioli, G.G., 2018. Lysophosphatidylinositols in inflammation and macrophage activation: Altered levels and anti-inflammatory effects. *Biochimica et Biophysica Acta (BBA)-Molecular and Cell Biology of Lipids* 1863 (12), 1458–1468.
- Mattes, W., Davis, K., Fabian, E., Greenhaw, J., Herold, M., Looser, R., Mellert, W., Groeters, S., Marxfeld, H., Moeller, N., 2014. Detection of hepatotoxicity potential with metabolite profiling (metabolomics) of rat plasma. *Toxicol. Lett.* 230 (3), 467–478.
- May, J.C., McLean, J.A., 2016. Advanced multidimensional separations in mass spectrometry: navigating the big data deluge. *Annu Rev Anal Chem (Palo Alto Calif.)* 9 (1), 387–409.
- Morzell, M., Sohler, D., Van de Vis, H., 2003. Evaluation of slaughtering methods for turbot with respect to animal welfare and flesh quality. *J. Sci. Food Agric.* 83 (1), 19–28.
- Primrose, S., Woolfe, M., Rollinson, S., 2010. Food forensics: methods for determining the authenticity of foodstuffs. *Trends Food Sci. Technol.* 21 (12), 582–590.
- Rahman, S., 2017. Religion and animal welfare—an Islamic perspective. *Animals* 7 (2), 11.
- Robertson, D.G., 2005. Metabonomics in toxicology: a review. *Toxicol. Sci.* 85 (2), 809–822.
- Ruiz Orduna, A., Husby, E., Yang, C.T., Ghosh, D., Beaudry, F., 2015. Assessment of meat authenticity using bioinformatics, targeted peptide biomarkers and high-resolution mass spectrometry. *Food Additives & Contaminants: Part A.* 32 (10), 1709–1717.
- Schrimpe-Rutledge, A.C., Codreanu, S.G., Sherrod, S.D., McLean, J.A., 2016. Untargeted metabolomics strategies-challenges and emerging directions. *J. Am. Soc. Mass Spectrom.* 27 (12), 1897–1905.
- Sidwick, K.L., Johnson, A.E., Adam, C.D., Pereira, L., Thompson, D.F., 2017. Use of liquid chromatography quadrupole time-of-flight mass spectrometry and metabonomic profiling to differentiate between normally slaughtered and dead on arrival poultry meat. *Anal. Chem.* 89 (22), 12131–12136.
- Trivedi, D.K., Hollywood, K.A., Rattray, N.J., Ward, H., Trivedi, D.K., Greenwood, J., Ellis, D.I., Goodacre, R., 2016. Meat, the metabolites: an integrated metabolite profiling and lipidomics approach for the detection of the adulteration of beef with pork. *Analyst* 141 (7), 2155–2164.
- Watson RR, De Meester F. *Handbook of lipids in human function: fatty acids*: Elsevier; 2015.